
Double Stage Vacuum Oil Purification

I Parameter

Model: HZLY-100A

Nominal flow: 6000L/h

Net oil capacity: 100L/min

Pumping rate: 540M³ /h

Working pressure: ≤ 0.4 Mpa

Working oil temperature: 40~70℃

Working power supply: 50Hz380V three-phase three-wire

Heating power: 60Kw (Separate control by two groups)

Total power: 67kw

Operating noise: ≤ 75 dB(A)

Inlet/outlet pipe diameter: 45/45

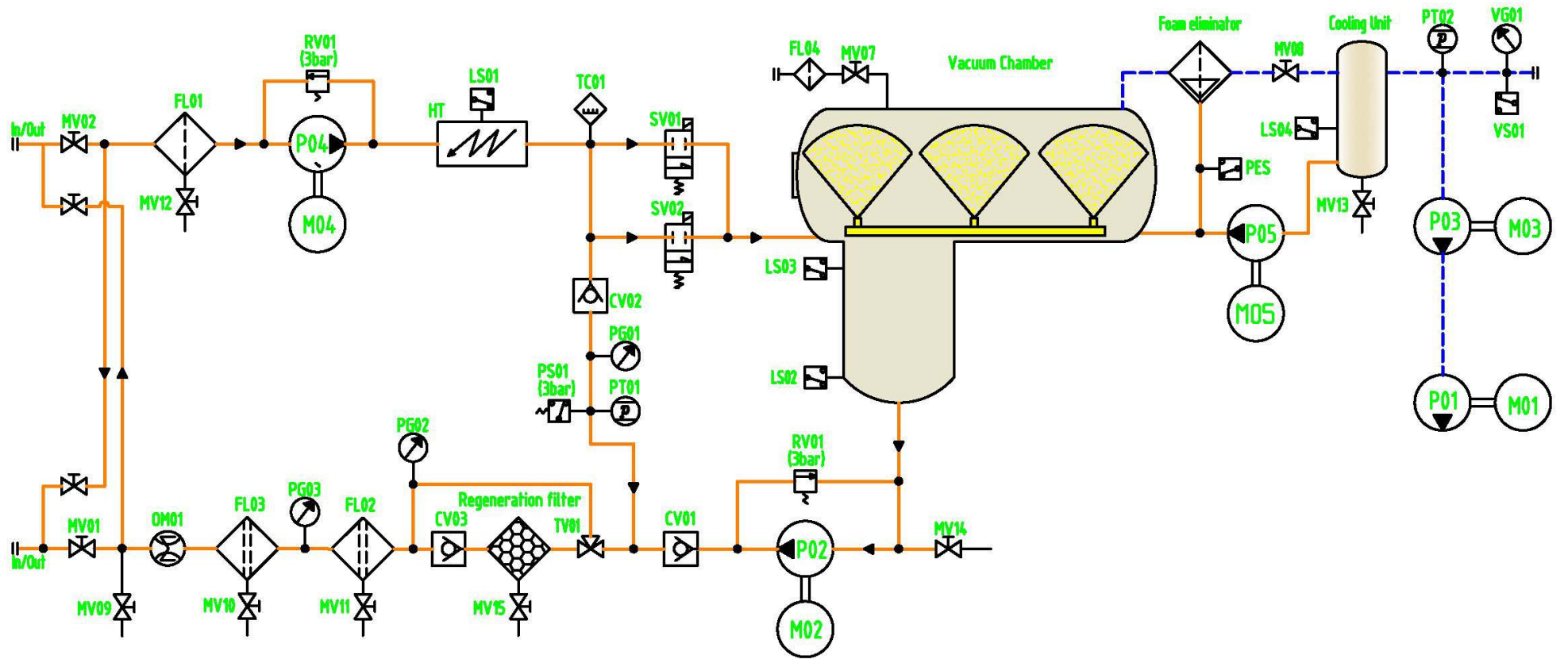
Dimensions: 165×160×170cm

Equipment weight: 870Kg

II. Product net oil indicators

-
1. Breakdown voltage: 70kv.
 2. Water content: 5 ppm
 3. Filtration accuracy: 5 μ m.

III. Diagram



Main Spare Parts

No.	Name	Function	
MV01	Outlet oil valve	Control oil outlet	
MV02	Inlet oil valve	Control oil inlet	
MV03	Outlet oil valve	Control oil outlet	optional
MV04	Inlet oil valve	Control oil inlet	optional
MV07	Gulp valve	Replenish degassing chamber air when stopping or repairing	
MV08	Vacuum switch	Switch to vacuum unit mode	optional
MV09	Sampling valve	Oil sample after treatment	
MV10~15	Emptying valve	Empty oil of oil container	
CV01~03	Single direction valve	One-way delivery of oil to prevent return of oil	
FL01	Primary filter	Remove large particles	
FL02	Secondary filter	Remove the impurities above 3 μ m	
FL03	Third filter	Remove the impurities above 1 μ m	
FL04	Air filter	Filtered air particle	
SV01	Main oil inlet solenoid valve	Main valve of liquid level	
SV02	Slave oil inlet solenoid valve	Main valve of liquid level	
FS01	Heating liquid level sensor	Collect the liquid level signal of the heater	
FS02	Low liquid level sensor	Collect the signal of low liquid level	
FS03	High liquid level sensor	Collect the signal of high liquid level	

FS04	liquid level sensor	Collect the signal of liquid level	Blowout preventer protection
PES	Foam level sensor	Collect the signal of foam	Blowout preventer protection
PT01	Vacuum pressure sensor	Collect the signal of vacuum pressure	optional
PT02	Filtration pressure sensor	Collect the signal of filtration pressure	optional
TT01	Temperature sensor	Collect oil temperature signal	
PS01	Pressure switch	High pressure protection of oil chamber	
HT	Heater	heating	
P01	Vacuum pump	Primary vacuum	
P02	Roots pump	secondary vacuum	
P03	oil transfer pump	Drain the oil from the vacuum chamber	
P04	Inlet oil pump	Transfer the oil	optional
P05	Drain pump	Drain the condenser oil	optional
Vacuum	Oil and gas separator	Separate the oil engine gas	
Cooling Unit	Cooling Unit	Reduce the temperature of the gas entering the vacuum	
Foam	Foam Eliminator	Deducted the foam	
Regeneration	Regeneration filter	Decolorize and deacidize oil	optional
VG01	Vacuum gauge	Display degassing chamber	
PG01	Pressure meter	Display filter filtration pressure	
OM01	Flowmeter	Record oil handling capacity	optional
WT01	Trace moisture tester	Detect the water content in oil	optional

IV.Configurations

NO.	Name	Model	Qty	Brand
1	Oil pump	CBY3100-1FL	1	Sichuan Changjiang
2	Oil pump motor	Y112-6	1	Chongqing Kongte
3	Vacuum pump	X-100	1	Shanghai Jiuxin
4	Toots pump	ZJY-150	1	Huaxin nanguang
5	Coarse filter	A050	1	
6	Primary filter	A010(10 μ)	1	
7	Second filter	A001(1 μ)	1	
8	Heater	10KW	6	
9	Ball valve		1	Ningbo Amico
10	Check valve	DN25	2	Ningbo Kailing
11	Electric		1	Delixi
12	Liquid level sensor		5	
13	PLC	CPU224	1	Fuzhou Nate